

ILLAWARRAS

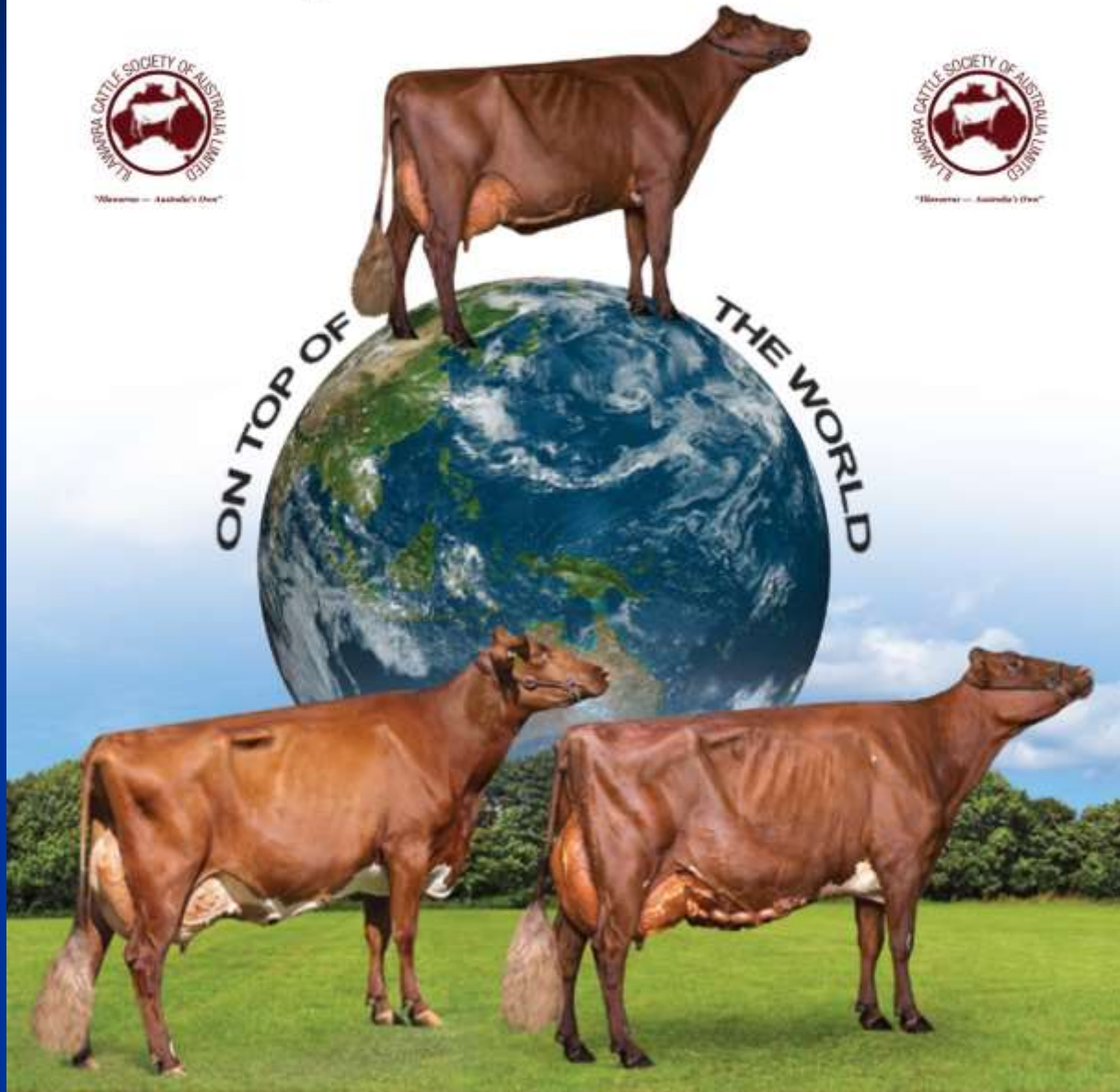
The dairy cows from 'Down-Under'



"Illawarra — Australia's Own"



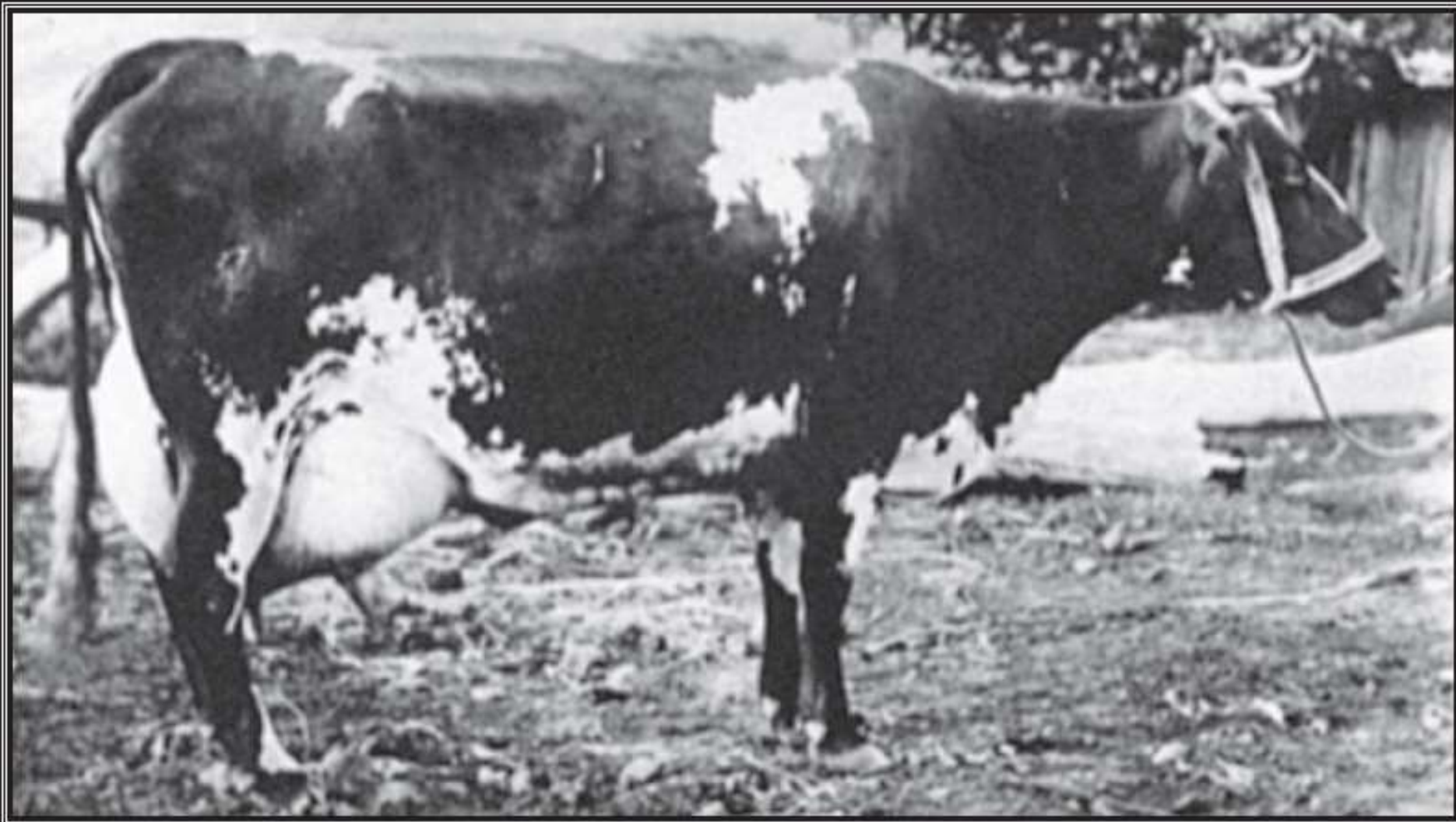
"Illawarra — Australia's Own"



Evolution of the Illawarra Breed

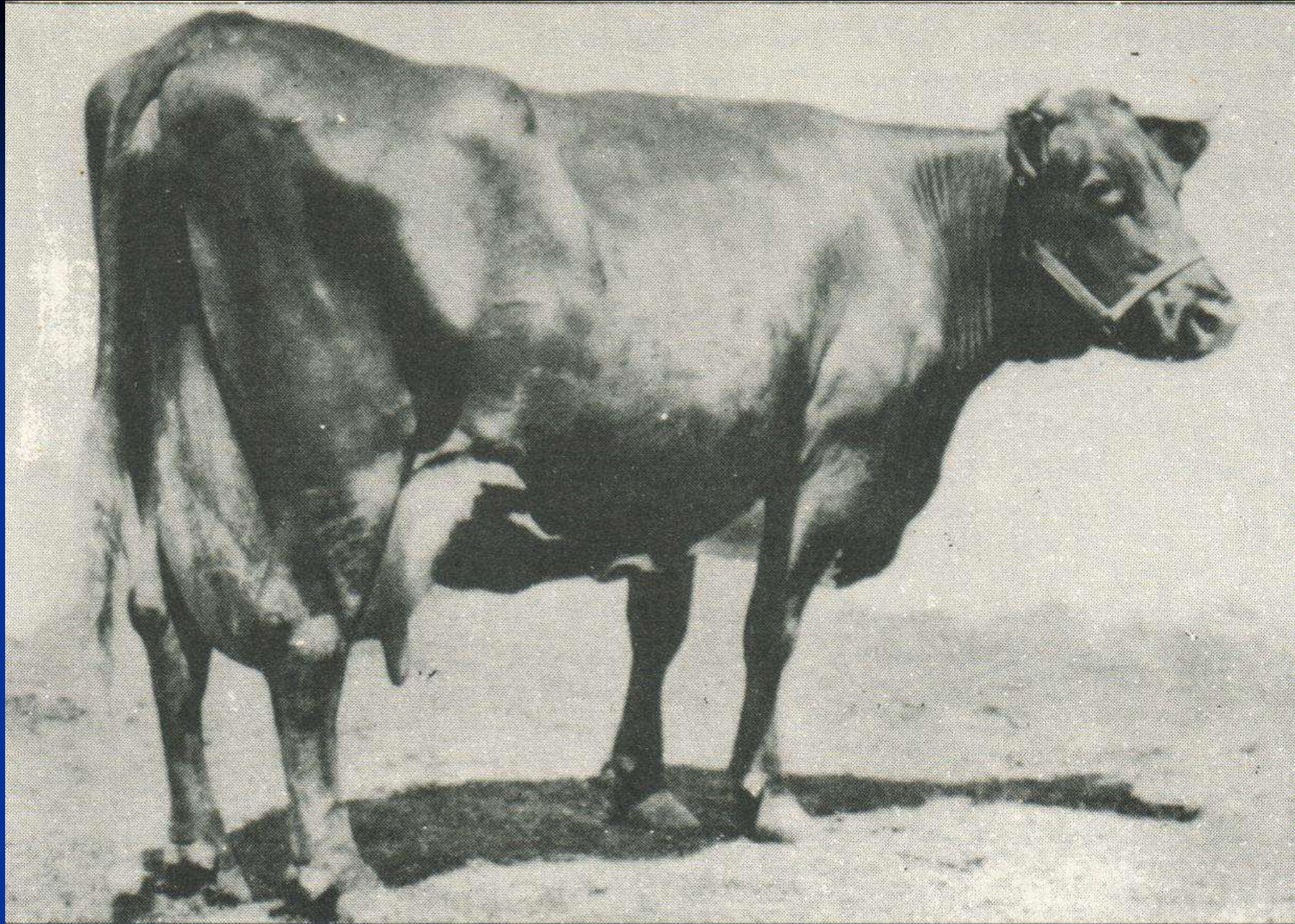
- **1840's** - Dairying commenced as an industry in the Illawarra region
 - Breeds included Longhorn Durhams, Shorthorn, Red Lincolns, Red Ayrshires & Jerseys
- **1860's** – Records & Facts more accurately recorded. A standard type of conformation of dairy cattle emerged

“Honeycombe”



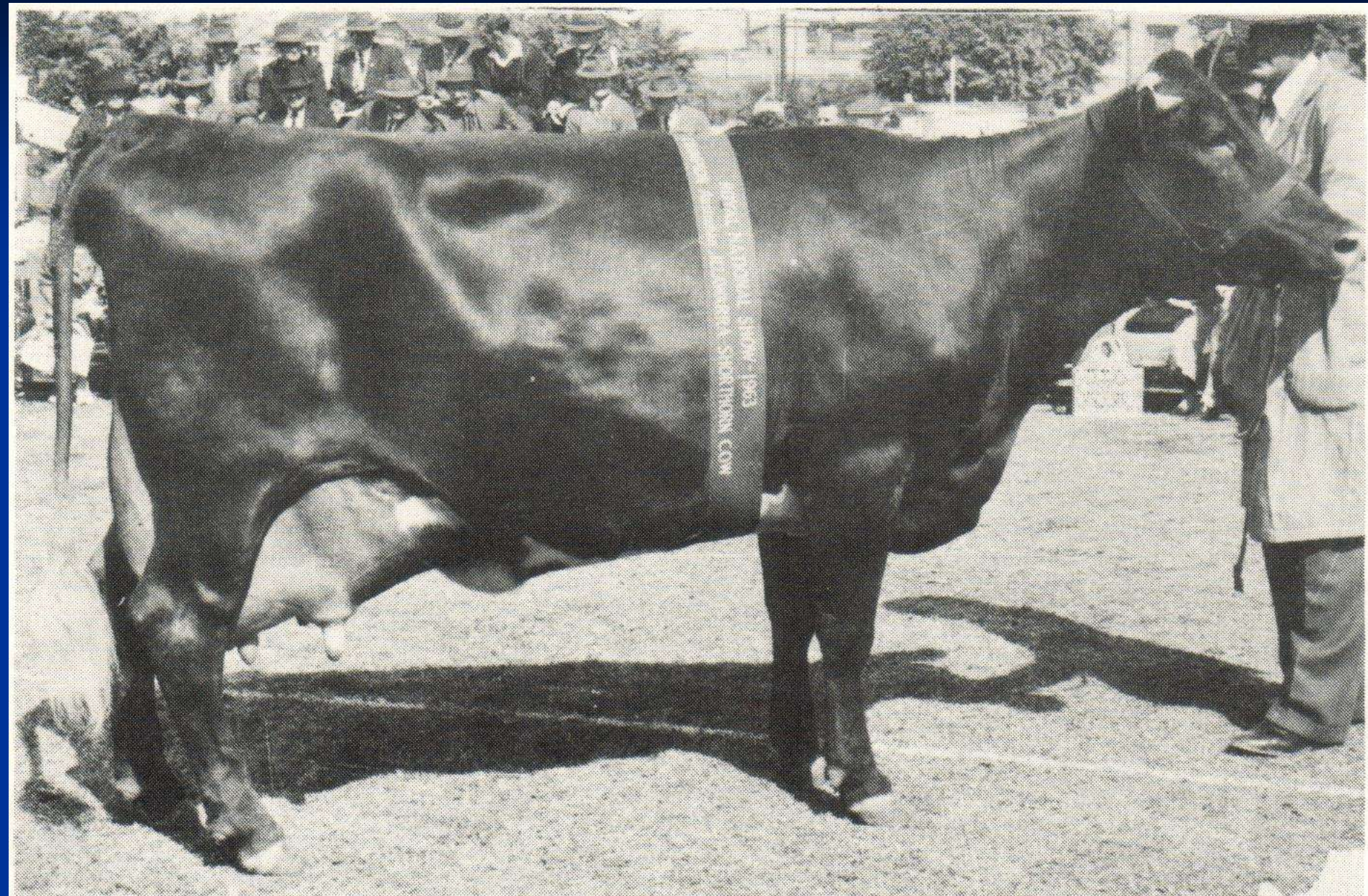
Evolution of the Illawarra Breed

- **1890's** – Breeding programs began revolving around Red & Roan Shorthorns & Ayrshire bulls
- **1899** – A contingent of “Illawarra Cattle” registered in the Milking Shorthorn Herd Book
- **1910** – Another Herd Book “Illawarra Dairy Cattle” established



MELBA XV OF DARBALARA

Sunny View Little Princess 30



Evolution of the Illawarra Breed

➤ 1980's

- Breed name changed to “Illawarra”
- Genetic Introductory Register (G.I.R.) commenced

The Illawarra breed today

- 1900 annual registrations with Illawarra Cattle Society
- 4314 cows herd recorded 2016/17
 - 1/3 of these registered
- Estimated population approx.
16,000 milking cows?

National 305 Day Production Records

Age	Milk lt	Prt kg	B/F kg	Cow Name	Owner	Sire	Year
S1	11,571	371	452	Blackwood Park Buttercup 232 *	JC Altmann & Son	Verbs Vicount	2015
J2	13,572	386		Blackwood Park Princess Lady 13 *	JC Altmann & Son	Rodway Moses	2018
			514	Blackwood Park Empress 40 *	JC Altmann & Son	LG Bumper	2013
S2	12,103	388		Blackwood Park Della 8 *	JC Altmann & Son	W.Handsome Tulip	2008
			498	Blackwood Park Rosebud 98 *	JC Altmann & Son	Silverleigh Monarch	2010
J3	15,063	452		Blackwood Park Buttercup 232 *	JC Altmann & Son	Verbs Viscount	2016
			496	Blackwood Park Buttercup 225 *	JC Altmann & Son	Royal Treble	2012
S3	13,344	413		St. Andrews Flora 110	Lester Family	Royal Treble	2018
		413		Glenbrook Venus 19	I & J Mueller	LG Bumper	2012
			572	Blackwood Park Susie 54 *	JC Altmann & Son	Blackwood Park Taz	2009
J4	15,288			Blackwood Park Buttercup 225 *	JC Altmann & Son	Royal Treble	2013
			632	Blackwood Park Laurel 90 *	JC Altmann & Son	IS Black Blitz	2014
		464		Treeton Princess 2273	G & R Williams	Syd Frem	2010
S4	13,265	417		Creighton Park Elizabeth 1589	Parkers Dairy	Ky Blue Marquess	2011
			536	Llandovery Kaiser Plum	T & E Hayes	Elmcroft Kaiser	2007
MAT	15,964			Blackwood Park Dot 17 *	JC Altmann & Son	Fradon Jet Red	2016
		526		Blackwood Park Josephine 2 *	JC Altmann & Son	HOExcellent	2015
			649	Blackwood Park Buttercup 225 *	JC Altmann & Son	Royal Treble	2014

* Defines Milking 3 times a day

Lifetime Milk Production Record Holder

**BLACKWOOD PARK
BUTTERCUP 221 VG88**

Born 22-12-2004

143,749L 5,075KgF 4,176KgP 10 lactations

*Buttercup 221 is still actively producing
within the herd and PTIC.*



2018 100,000 litre Milk Lifetime Cows

Name of Cow	Milk Litre	B/F kg	Prt kg	Lact
BLACKWOOD PARK BUTTERCUP 221 VG88	143,749	5,075	4,176	10
OVENSDALE SCARLET 161 VG	121,715	4,189	3,872	11 cont
BLACKWOOD PARK JACKIE EX90	119,107	4,953	3,917	12
LLANDOVERY RN POPPY EX	125,744	4,569	3,974	9
TREETON MARION 2300	116,012	4,840	3,931	
BLACKWOOD PARK LAUREL 85 VG88	112,918	3,829	3,492	8
TREETON HAZEL 2213	112,850	5,061	3,723	
OVENSDALE PRIMULA 16 VG	110,198	3,538	3,345	9
OVENSDALE ROSE 29 VG89	109,846	4,071	3,498	13
OVENSDALE BEAUTY 302 VG	107,626	3,770	3,616	9
OVENSDALE PIXIE 31 VG 88	104,405	3,740	3,229	10
OVENSDALE TRINKET 89 VG88	102,348	3,676	3,451	8
KANGAWARRA MALDA 2617	101,983	3,490	3,330	10
KANGAWARRA VENUS 2270	101,570	3,862	3,299	9
OVENSDALE PIXIE 40 VG88	101,494	4,120	3,488	8
OVENSDALE BUTTERCUP 207 EX	101,477	4,593	3,549	8
OVENSDALE ROSE 118 VG	101,571	3,254	3,225	8 cont
OVENSDALE JENNY 62 EX90	101,073	3,997	3,210	10 cont
OVENSDALE BUTTERCUP 298 EX	100,771	3,542	3,298	8 cont
TREETON GLORIA 2350	100,108	4,381	3,436	

Illawarra Semen Exports

- New Zealand
- USA
- Canada
- United Kingdom
- Ireland
- Netherlands
- Latin America
 - Brazil, Chile etc...

The Future

- Maintain production progress
- Maintain relevance to the commercial dairy producer
- Retain traits of “Differentiation”
 - Longevity, Temperament, Calving Ease...etc
- **Genomics ???**